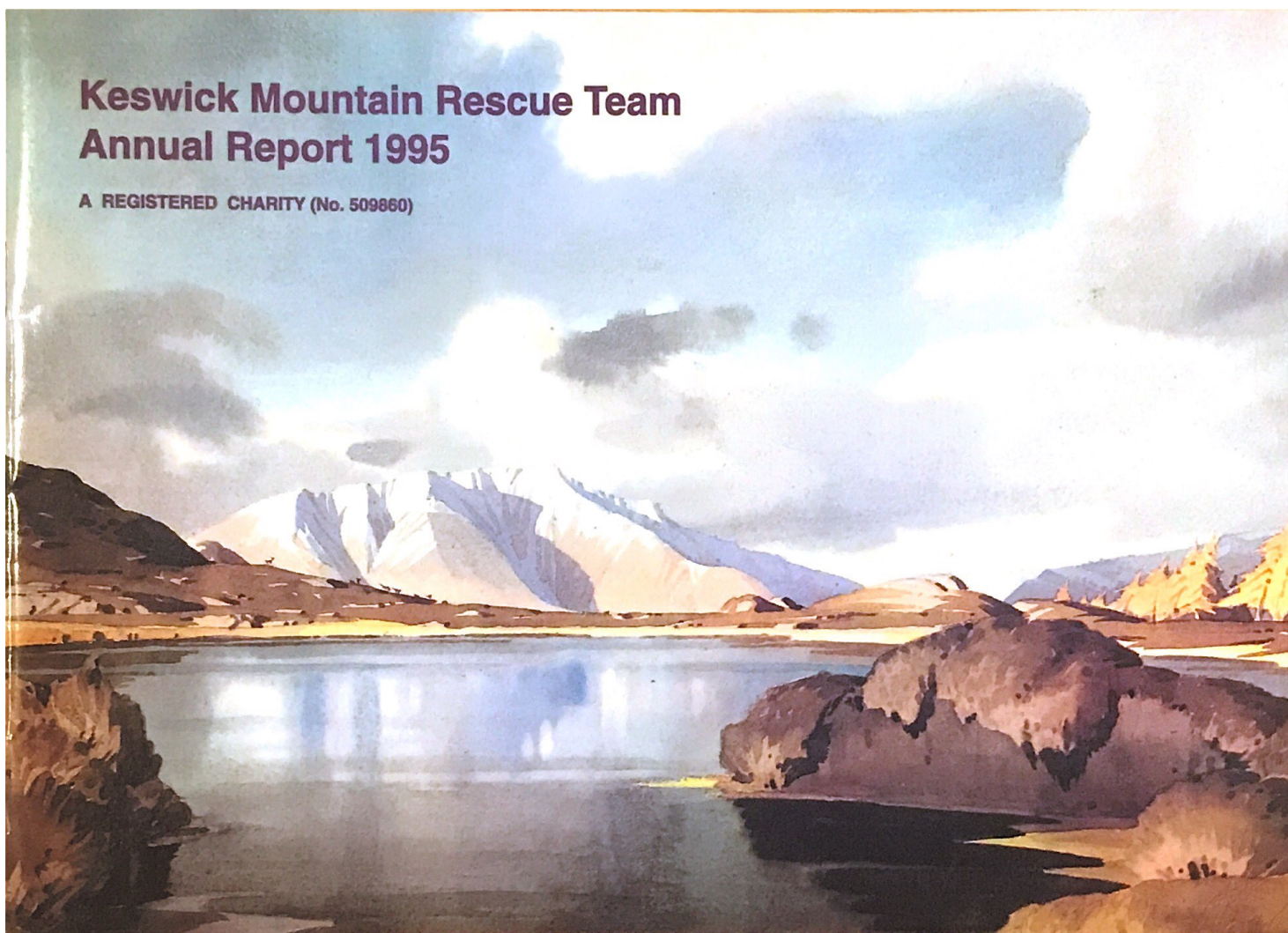


# **Keswick Mountain Rescue Team Annual Report 1995**

**A REGISTERED CHARITY (No. 509860)**



## Keswick Mountain Rescue Team 1995

<b>Team Leader:</b>	Mark Hodgson	<b>Collection Box Co-ordinator:</b>	Brian Martland 15 Helvellyn Street Keswick, Cumbria (017687 73848)	<b>Transport Officer:</b>	Allan Alcock
<b>President:</b>	George Fisher MBE			<b>Equipment Officers:</b>	Chris Francis Scott Henderson
<b>Vice-President:</b>	Mike Nixon MBE			<b>Control Room Quartermaster:</b>	Keith Stephenson
<b>Chairman:</b>	Mick Guy	<b>Deputy Team Leaders:</b>	Pete Barron Roy Henderson Paul Horder	<b>Report Editor:</b>	Rachel Slattery
<b>Secretary:</b>	Pete Barron 7 Middle Howe Rosthwaite Keswick Cumbria (017687 77325)	<b>Medical Officer:</b>	Dr. Peter White	<b>Honorary Auditor:</b>	John Wood
<b>Treasurer:</b>	Andrew Jones 41 Blencathra Street Keswick Cumbria (017687) 74075	<b>Training Officers:</b>	David Pratt Andrew Slattery		
		<b>Radio Officer:</b>	Bill Booth		

### Callout List

Allan Alcock <i>Forecourt Attendant</i>	Chris Francis <i>Research Assistant</i>	Norman Lilley <i>Retired</i>	Keith Stephenson <i>Joiner</i>
Donald Angus <i>National Park Ranger</i>	Mick Guy <i>Headmaster</i>	Brian Martland <i>Retired</i>	Ian Wallace <i>Dentist</i>
Dominick Atkinson <i>Teacher</i>	Martin Hardman <i>Ambulanceman</i>	Malcolm Miller <i>Headmaster</i>	Lance Waudby <i>Delivery Driver</i>
Jim Barber <i>Retired</i>	Roy Henderson <i>National Trust Warden</i>	Keith Newton <i>Ambulance Paramedic</i>	Dr Peter White <i>G.P.</i>
Peter Barron <i>National Park Ranger</i>	Scott Henderson <i>National Park Ranger</i>	Mike Nixon <i>Retired</i>	
David Brown <i>Teacher</i>	Mark Hodgson <i>Chartered Builder</i>	Des Oliver <i>Retired</i>	
Paul Carter <i>Baker and Confectioner</i>	Simon Hodgson <i>Builder</i>	Dr. Will Ponsonby <i>Hospital Doctor</i>	
Neil Dowie <i>Hotelier</i>	Katharine Horder <i>Teacher</i>	David Pratt <i>Teacher</i>	
Darren Elliott <i>Builder</i>	Paul Horder <i>Teacher</i>	David Robinson <i>Shop Assistant</i>	
Mike Fanning <i>Solicitor</i>	Robin Humphreys <i>Cashier</i>	Andrew Slattery <i>Police Constable</i>	
Anne Francis <i>Teacher</i>	Andy Jones <i>Police Constable</i>	Rachel Slattery <i>Special Education</i>	
	Peter Little <i>Pharmacist</i>	Brian Spencer <i>Teacher</i>	

### Probationary Members

Joe Cawood *Shop Assistant*  
Sally Clark *Teacher*  
Phil Newton *Hotelier*  
Chris Strutt *Outdoor Education*

## Foreword

1994 has been a year of changes and consolidation for the Team. Mark Hodgson was elected Team Leader at the Annual General Meeting in January, in succession to Mike Nixon, and is gradually establishing his own style of leadership with the Team. Thankfully, the rescue workload has not increased, which has enabled us to put in a lot of work on the new Headquarters project.

I wrote this time last year that we expected to be a long way on in our progress towards a new base. And indeed we are, but I must admit none of us could have foreseen the volume of bureaucracy that would stand in the way of that progress for a large part of the year. Every month brought a peak or trough, and it was not until November that we knew that we had managed to secure both the site, and the planning permission, for a new Headquarters, which will eventually be built down on the Lakeside Car Park. We feel the final design by Steve Harwood and Andy Prickett of ADK is entirely in keeping with a beautiful site.

We are grateful that our patrons have kept faith with us during this trying period, especially Mrs Ada Hillard, who has continued to encourage and support us throughout the year. In financial terms, we are getting on for half way to our target of £200,000. Thus 1995 will see the big fund-raising effort, and we hope that all of you reading this report will give us your tangible support, to enable us to reach our goal.

On behalf of the Team, I would like to extend our thanks for the efforts of all those who have supported us in our campaign so far. Remember the target is to be in and operational by our 50th anniversary in 1997 - if not before!

*Mick Guy, Chairman*





## Team Leader's Report

1994 has been a year of change for the team following Mike Nixon's retirement as team leader at the end of January. I am very proud to have been elected leader by the team to follow such distinguished predecessors and would like to thank them for their support and assistance.



The first few months saw us at almost the same level as previous years due no doubt to the number of people taking advantage of the winter conditions lasting much longer than usual. The milestone of our 1500th rescue since the Team's formation in 1947 was reached in November.

It is a reflection of the commitment of all Team members when considered that in addition to the 77 callouts there have been some 30 training exercises including a full weekend first aid course run jointly with Penrith, Patterdale and Kirkby Stephen teams. Twenty three members of Keswick Team attended and passed the Mountain Rescue Council certificate. Our thanks go to the organisers.

We have been fortunate again to receive welcome assistance from the R.A.F. On thirteen occasions we have called for the help of a helicopter to assist in the early evacuation of seriously injured casualties, greatly reducing the transfer time to the most suitable hospital. The skill of the pilots and their crews, in often difficult conditions, is a great benefit to mountain rescue. R.A.F. ground teams from Leeming and Stafford have also assisted when in the area on training exercises or when specifically called.

1995 will see us raising funds for our long awaited new headquarters. Even with this additional objective the speedy, efficient and careful treatment and evacuation of casualties remains, as always, the top priority.

*Mark Hodgson*





## Training Report

The last twelve months have seen us build on the progress of recent years with our training programme being the most structured and comprehensive to date.

As recreational use of the Lakes becomes more varied we are called upon to

that would stand in the way of that progress for a large part of November that we knew that we had managed to secure which will eventually be built down on the Lakeside Car Park. entirely in keeping with a beautiful site.

The success of the weekly sessions are due in a large part to the enthusiasm and commitment of individual team members who volunteer to run sessions on their specialist areas and so reduce the strain on ourselves.

As a result of the Rescue 2000 study the Lake District teams have recently agreed on a common basic training syllabus and membership application procedures with Keswick being at the forefront of the development of both.

The coming year is sure to be a testing one with fundraising added to the existing workloads of incidents and training. This cannot, however, affect the preparation of the team for its operational role and training remains a priority.

*Andrew Slattery*

*David Pratt*





## Equipment Report

The Team may be directly affected by the introduction of new European standards in 1995 which could impose age limits on climbing equipment such as ropes, harnesses, karabiners, etc. Keswick Team already has a program of changing over its man made fibre and plastic based items such as; ropes, harnesses and helmets every three years and has regular inspections of all equipment but if new regulations impose stricter standards, the Team would be involved in additional costs and may have to look into the possibilities of sponsorship.

The primary role of equipment officers is to maintain all equipment and ensure that the three Team vehicles are fully equipped ready for the next incident. At busy times, when several incidents occur in short succession, this can involve inspecting and drying out equipment in the same small room as the control room.

As the demand for the services of rescue teams increases, we are looking forward to moving into a new base.

*Scott Henderson, Chris Francis*

## Incident Report 1994

1	1 January 16:24	Causey Pike	A woman on Cat Bells reported someone in distress on the flank of Causey Pike in the snow. A search was made but nothing found. RAF Leeming Mountain Rescue Team assisted.
2	2 January 16:14	Helvellyn - Brown Cove Crag	A man (25 yrs) had completed his gully climb when he slipped and fell 500' to the bottom, sustaining a broken femur and back injuries. He was evacuated by helicopter to Carlisle.
3	5 January 12:45	Latrigg	A man (61 yrs) slipped on wet grass and broke his leg.
4	16 January 14:20	Great End - Skew Gill	A man reported his beagle to be stuck high up on the side of Skew Gill. As he was in danger of falling with the dog he came for help. At the 1000' boulder the Team found the dog which had been rescued by other walkers.
5	17 January 20:24	High Seat	A Cessna 182 with one man (64yrs) on board, an aerial photographer, crashed near the summit of High Seat. A search involving 117 people was made and the aircraft was located some time after midnight. The pilot was killed on impact.
6	3 February 15:15	Grey Knotts area	Requested to assist Cockermouth MRT in search for 2 walkers who had used a mobile phone to say they were lost in a blizzard. It was not known where they were, but they turned up safe at Seathwaite later as the teams were searching. Atrocious conditions for a search.
7	14 February 16:05	Great End	2 adults and 2 children had completed a gully climb. The 2 men slipped on the descent, one sustaining a lacerated scalp, the other concussion. They had all managed to walk down and were met by the Team at Stockley Bridge.
8	14 February 17:26	Derwentwater lakeside footpath	On returning from the previous incident, the Land Rover was flagged down near Falcon Crag to assist an elderly gentleman who had fallen on rocks on the lakeside path, injuring his ribs and head.
9	19 February 15:35	Great Gable - Aaron Slack	A boy (9 yrs) slipped and injured his leg in snow. An initial report of a broken leg turned out to be only bruising.
10	19 February 17:35	Great End - The Band	A man fell 100' when his crampon came off. He sustained a compression fracture of his thoracic vertebra and a broken rib. He was taken by helicopter to Hexham General Hospital.
11	20 February 16:21	Great End	A woman (20 yrs) slipped and fell 200' while descending after climbing. She was taken by helicopter to the Cumberland Infirmary, Carlisle, with serious head injuries.
12	23 February	Falcon Crag - Bleaberry Fell	Request to assist the Fire Service with transport and beating of a heath fire in a blizzard. The fire was, however, extinguished as the team was being deployed.
13	24 February 14:15	High Rigg	A woman (69 yrs) slipped, broke her ankle and damaged her wrist.

14	27 February 13:27	Watendlath	A woman (44 yrs) slipped on wet rock and broke her ankle. RAF Leeming MRT were in the area and went to assist.
15	8 March 12:00	Scafell Pike area	Request from Langdale/Ambleside MRT to assist in search for young woman (28 yrs) reported to be overdue from a walk in the Scafell Pike area. She turned up safe and well at Boot as the Team was leaving.
16	16 March 14:54	Rosthwaite - Watendlath path	A man (54 yrs) slipped and broke his ankle.
17	19 March 12:56	Great End - Central Gully	A man (59 yrs) soloing up the gully was avalanched and carried down 500' sustaining fatal injuries. Another man was hit by the fall at the foot of the gully but he managed to walk down. A helicopter assisted in the recovery of the climber.
18	26 March 16:10	Great Cockup - Hause Gill	A man was found in a collapsed condition by another walker. He was found to be dead on arrival of the Team.
19	1 April 08:20	Skiddaw House	A boy (14 yrs) was evacuated by Land Rover from Skiddaw House after he had injured his knee following a slip on Skiddaw.
20	2 April 12:12	Helvellyn Gill	A woman (31 yrs) became unwell. She was escorted down by the Team and examined by a doctor.
21	3 April 14:31	Hindscarth - Scope End	A man slipped and sustained a Potts fracture of his ankle.
22	5 April 20:55	Greenup Edge	A Duke of Edinburgh's Award group succumbed to the weather. They went to ground in a tent, but one girl required helicopter evacuation for treatment in hospital for hypothermia.
23	7 April 14:00	Castle Crag	A man (37 yrs) slipped into the beck and broke his arm.
24	21 April 12:10	Rigg Head Quarries	A woman (50 yrs) slipped on wet grass and sprained her ankle.
25	28 April 22:30	Greenup Edge area	A man failed to report in, as promised, having planned to walk from Longthwaite to Grasmere youth hostels. A joint search with LAMRT and SARDA proved fruitless. The man telephoned in later next day to say he had changed his plan!
26	3 May 11:48	Shepherd's Crag - MGC E1 5b	A man fell 20' while leading, sustaining head, neck and hip injuries
27	8 May 14:50	Skiddaw summit	A woman (60 yrs) tripped and injured her head and face.
28	8 May 14:50	Skiddaw - Barkbethdale	A man (58 yrs) slipped and broke his ankle.



29	15 May 12:25	Cat Bells	A woman slipped on wet grass and broke her ankle.
30	21 May 16.50	Shepherd's Crag - Kransit Crack	A man was hit by a rebounding tree branch whilst descending from the route behind another climber who let go of it too soon! He lost his balance and fell about 50' sustaining a broken leg.
31	22 May 15:05	Causey Pike - Sail path	A man (54 yrs) collapsed whilst walking. He was taken by helicopter to West Cumberland Hospital and detained in the Coronary Care Unit.
32	24 May 20:25	Esk Hause area	A woman (27 yrs) was left to wait at Esk Hause whilst the rest of the group went on to climb Scafell Pike. She was not there on return so a search was mounted and she was located by helicopter not far from Esk Hause.
33	30 May 15:00	Walla Crag - Cat Gill	A woman (49 yrs) slipped and broke her ankle.
34	4 June 13.55	Low Scawdel - Goat Crag area	Calls for help and an ambulance resulted in a thorough search, including the use of a helicopter. Nothing was found.
35	5 June 13:25	Bowder Stone	A man (55 yrs) fell 20' when his belay failed while abseiling from the Bowder Stone. He sustained pelvic injuries, which turned out to be not serious.
36	8 June 15.35	Helvellyn - White Stones path	A man (52 yrs) slipped and broke his ankle.
37	11 June 13.15	Castle Rock - Thirlmere Eliminate E1 5b	A man fell 50' whilst leading and sustained a severe open dislocation to his foot. He was treated on the cliff face before being lowered and evacuated by helicopter from RAF Valley in N.Wales.
38	15 June 20:50	Barrow	A fell runner slipped and bruised himself. Although assistance was requested, it was not required. The runner walked down unaided.
39	18 June 15.12	High Raise	A participant in the annual Four Three Thousander event succumbed to atrocious weather conditions and collapsed with hypothermia. He was rewarmed on the summit before being brought out of the cloud to a waiting helicopter. Bowland-Pennine MRT also in attendance.
40	22 June 12:35	Cat Bells - Hause Gate	A woman (74 yrs) slipped and fell, breaking her arm.
41	25 June 01.45	Blencathra - Blease Fell area	2 men (74 yrs & 44 yrs) set off for a walk during a thunderstorm at 6pm. They became separated and the older man (father) turned up after midnight having fallen. A search was initiated for the son but he returned to his car at 3.40 am as the Team was looking for him. The father had suffered a stroke 4 weeks earlier.
42	25 June 14:29	Sour Milk Gill	A youth (16 years) has sustained a scalp injury whilst descending the path at Sour Milk Gill. However, he was assisted down by others and the Team was not required when it arrived.

---

43	26 June 12:45	Cat Bells - Hause Gate	A woman (48 yrs) wearing tennis shoes, slipped and broke her leg.
44	2 July 12:05	Blencathra - Sharp Edge	A woman (32 yrs) slipped while walking along the side of Sharp Edge and fell 100'. She sustained head and arm injuries. She was treated and then lowered to the foot of the crag before being carried to a waiting helicopter which had been training in the area with the RNLI.
45	7 July 19:50	Scaleclose Coppice	A mountain biker (15 yrs) sustained a fall and badly gashed his leg.
46	9 July 21:25	Mosedale	A youth (15 yrs) in a D of E group was reported to have broken his arm. He was found, treated for minor injuries and left to spend the night in his tent.
47	9 July 22:30	Clough Head	A report of flashing lights turned out to be torches of people taking part in the Bob Graham round.
48	12 July 13:40	Cat Bells	A youth (15 yrs) slipped and sustained a cut head.
49	18 July 15:04	Falcon Crag	A woman (66 yrs) from New York slipped in low-sided shoes with no tread and broke her ankle.
50	20 July 18:25	Langstrath	A woman (56 yrs) slipped and injured her ankle.
51	26 July 13:08	Helvellyn - Brown Cove Crag	Request to assist with evacuation of male student (16 yrs) with an asthmatic attack.
52	9 August 20:30	Borrowdale area	A mother (34 yrs) and her daughter (7 yrs) were overdue from a walk from Cat Bells to Rosthwaite. Both located safe and well.
53	13 August 15:45	Clough Head	A paraglider (65 yrs) was caught in a rotor down-draught and dumped 40'. He sustained pelvic and internal injuries.
54	15 August 14:45	Bannerdale Crag	A local farmer overturned his quad bike and broke his ankle.
55	17 August 16:40	Doddick Fell	A man (32 yrs) collapsed with a suspected heart attack.
56	24 August 17:30	Black Crag, Troutdale	A request from the police to investigate a large amount of abandoned climbing gear at the top of the crag. A search found nothing further.
57	4 September 16:47	Comb Gill	A woman (41 yrs) slipped and broke her ankle whilst returning from climbing Corvus on Raven Crag
58	14 September 15:50	Dob Gill, Thirlmere	A woman (45 yrs) slipped on wet grass and broke her ankle.

---



59	16 September 16:20	Darling How, Whinlatter	A man (23 yrs) suffered an epileptic fit and fell, suffering facial injuries.
60	24 September 18:04	Styhead area	A request from Wasdale MRT to assist in locating a man with ankle injuries, making his way down from the Corridor Route. He was found by a team member, and got off the hill with a broken ankle.
61	24 September 20:15	Bassenthwaite Lake	A request was received to assist in a search for an overdue dinghy which had left its campsite at 2 pm. Team searchlights were used to assist on lake boats. The missing couple were found by the police on a lakeside road.
62	25 September 17:20	Stonethwaite - Dock Tarn path	A woman, with have an ankle injury, was reported to be experiencing difficulty in descending the steep path. She was assisted by Team members.
63	4 October 21:50	Honister area	Two women, 40 yrs and 22yrs booked accommoation in Borrowdale on the Coast to Coast walk but failed to arrive. A search was made but nothing found. To date nothing is known of their whereabouts other than they left Eskdale that morning.
64	12 October 13:56	Cat Bells	A woman (55 yrs) collapsed. She was treated and carried down by the Team. Possible heart problems.
65	16 October 15:54	Shepherd's Crag - Little Chamonix	A female student (20 yrs) fell 10' when being lowered from the climb. She sustained a broken tibia and fibula.
66	22 October 16:58	Cat Bells	A woman (40 yrs) slipped and broke her ankle.
67	27 October 16:55	Dob Gill, Thirlmere	A woman (75 yrs) slipped and sprained her ankle.
68	1 November 14:56	Watendlath - Lodore path	A man (59 yrs) slipped and broke his ankle.
69	1 November 19:00	Gillercombe Buttress	Two climbers were reported overdue at Youth Hostel from climbing trip. Investigations and further reports discovered the pair still climbing - in the dark. They were able to complete their route and descend to the valley without assistance.
70	6 November 13:10	Grains Gill	A woman (53 yrs) slipped on the path and broke her ankle.
71	20 November 14:57	Raven Crag, Comb Gill	A man (47 yrs) slipped and broke his ankle at the foot of the crag after abandoning his climb due to the poor weather. Airlifted to hospital by helicopter after being lowered down the steep fellside.
72	26 November 15:58	Angle Tarn outlet	A man collapsed with an ear infection (labrinthitis). After taking his own medication he was later able to walk down, escorted by the Team. Assisted by RAF Stafford MRT.
73	27 November 14:50	High Spy - head of Gate Gill	A man slipped and injured his ankle. Assisted by RAF Stafford MRT.

74	8 December 17:50	Souther Fell	Flashing lights were reported by a passing motorist. Investigations found nothing. Suspected to be a mountain leadership group leaving for an expedition. False alarm with good intent.
75	10 December 20:21	Glaramara - Comb Gill	Report of flashing lights by local farmer. A thorough search found nothing. Possibly a party late off the hill.
76	11 December 16:43	River Greta - Threlkeld	A canadian canoeist got into difficulty on the river which was in spate. Having capsized several times she decided to walk into Keswick. However, as darkness fell the woman failed to meet up with her companions and a search was launched. She turned up safe and well a short time later.
77	26 December 14:35	Grange Fell - Kings How	A family of two adults and three children became stuck on steep ground attempting to descend directly to Bowderstone car park on a very wet and windy day. The party were quickly located and helped down the fell.

In addition to these incidents the Team was alerted on a number of occasions through the year after reports of injured or missing persons. However, these situations were resolved quickly and only incidents involving the actual deployment of Team members are recorded.

The Team also make a number of animal rescues for local farmers every year though these are not recorded.

## Keswick Mountain Rescue Team

### Search Dog Involvement in Incidents outside the Local Area

1	30 July	Cave Rescue Organisation	Search for a woman missing with depression at Ingleton Falls. One Keswick dog and its handler attended. The woman turned up safe and well in Lancaster.
2	27 November	Penrith MRT	Search for a elderly man missing from home in the Penrith area. Two Keswick dogs and their handlers were involved. The man was found the following day close to home suffering from hypothermia.

#### SEARCH DOG TARN

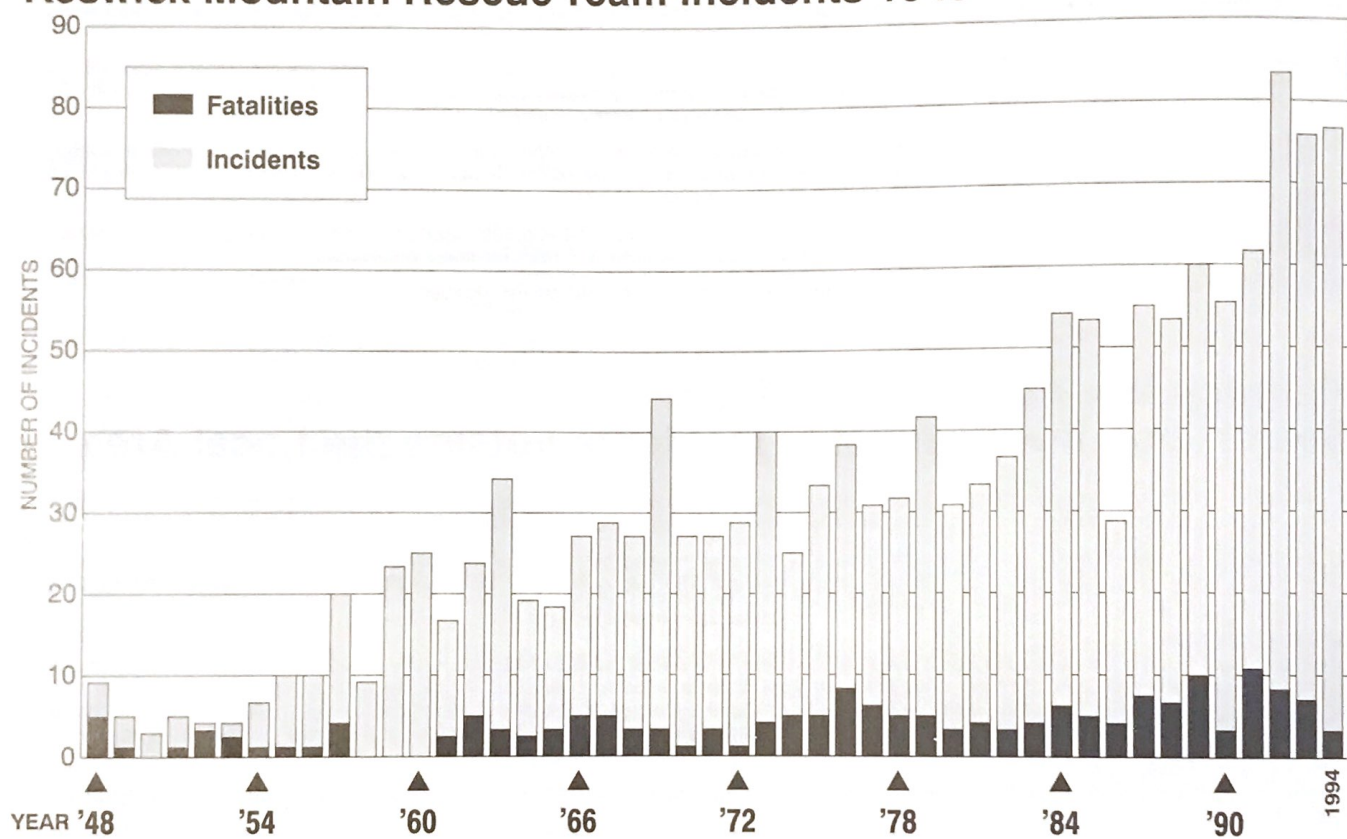
The Team is sad to loose the services of Search Dog Tarn this year, who died at the age of 12, after nearly ten years as a graded Search dog. A genuine character, she was one of the most effective search Dogs in the Lake District in the hands of her owner Chris Francis, with a string of finds to her name - often achieved through downright obstinacy, and a refusal to give up! (Somewhat similar to her handler.) It is also true that she was just as single-minded in her pursuit of food, or the deepest smelliest bog that she could dig in. No longer shall we hear the familiar shout, " Come here Tarn, you foul dog!....." Sadly, Tarn died of cancer in the summer, working up to the end.

The happy sequel is that Chris has just managed to grade his new dog, " Loch " in December, so the Golden Labrador Search Dog Tradition in the Team continues.

*Mick Guy, SARDA Lakes Secretary.*



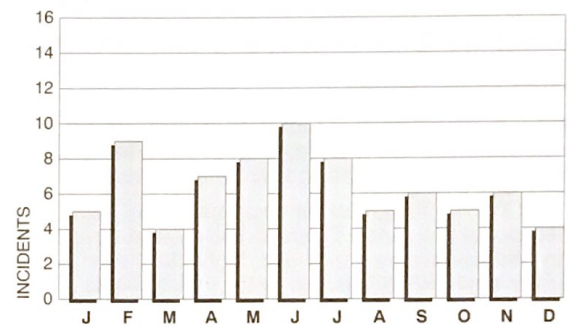
## Keswick Mountain Rescue Team Incidents 1948 - 1994



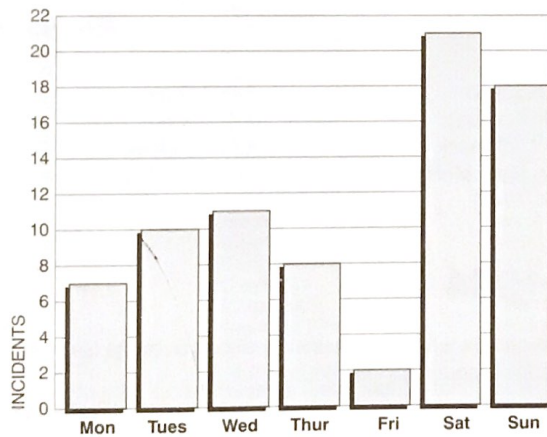
## SUMMARY OF INCIDENT TYPES

Fellwalking leg	24	Avalanche	1
Search	13	Canoeing	1
Collapse	8	Cragfast	1
Fellwalking other	8	Fellrunning	1
Rock climbing	5	Lake rescue	1
Other	4	Mountain biking	1
Snow and ice climbing	4	Paraglider	1
Hypothermia	2	Scrambling	1
Aircraft Crash	1		

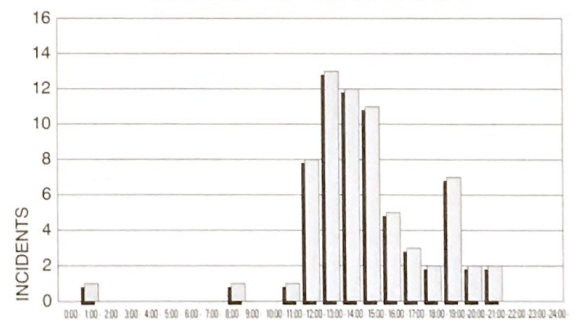
## MONTHS OF THE YEAR 1994



## DAYS OF THE WEEK 1994



## TIMES OF DAY 1994





---

## Supporters Group

It is just over a year ago, since the idea of a Support Group for the team was first floated at one of our quarterly meetings. The idea being that this group would try to involve people outside the team who wished to be associated with our fund-raising efforts without becoming Team members.

A letter duly appeared in our local newspaper, asking for interested volunteers, and as a result a small group was formed. The commitment made by active Team members in terms of call outs, practises, plus when the New Base moves from dream to reality, yet more demands upon their free time, will mean that they will be pleased of any support they can get.

With that in mind the group set about running or being involved in a number of events ranging from a coffee morning in the Moot Hall, supporting our Local Operatic Society who gave a Christmas concert for us, providing refreshments at the Rescue Services Day in Keswick, a barn dance and 'Nightriders' sounds of the 60's dance, at our local Labour club. Many of these events having raffle prizes generously donated by the trades people of Keswick, something we always must give credit and thanks for.

We were involved in Keswicks, annual Victorian Fair, selling a great line in T/shirts, sweatshirts, etc., with our New Headquarters Appeal Team logo on them. This was done to support Team members who, suitably dressed in Victorian climbing gear, had rescued Santa Claus from the fells. Nothing to do with rescuing people, just part and parcel of what it means to be a member of a modern voluntary rescue organisation.

If you would like to know more about the Support Group please contact our secretary: Mrs E Pratt, Raingauge Cottage, Seathwaite, Borrowdale, Keswick

*Robin Humphreys*

### List of Members

Robin Humphrys  
Val Nixon  
Elaine Pratt  
Dave Robinson

Jane Fanning  
Anne Francis  
Jan Beedham  
Peter Little

Sarah Eynon  
Terry Blanchard  
Anne Cammack  
Roy & Mary McNamara

R & P Gray  
M.T. Green  
Howard Moven  
Mr & Mrs Petty

## Donations 1994

Team member would like to express their thanks to all the individuals and groups who have made donations over the last year. We rely heavily on this support and without your generosity would loose a valuable source of our income.

A list of benefactors is too long to include in this report but will be available on request.

## Collection Box Sponsors

If you would like to help raise money for the team by having a collecting box, please contact Brian Martland, the Collecting Box Co-ordinator, on Keswick 73848.

Acorn House  
Allerdale House  
Armathwaite Hall  
Army and Navy Stores  
Askew Rigg  
Bank Tavern  
Barclays Bank  
Barrow House Y.H.A  
Bay Tree  
Beaty & Co. Wigton  
Beckstones Guest House  
The Beeches Guest House  
Berkley Guest House  
Bonshaw Guest House  
Boots Chemist  
Bookends  
Brierholme Guest House  
Brookfield House  
Brooklyn House  
Burleigh Mead Hotel  
Mr & Mrs P Butson  
Cattle House Watendlath  
Call of the Wild  
Camping and Caravan Club Site  
Castle Head House  
Castle Inn  
Castlerigg Camp Site  
Chaplin's Bookshop  
Chaucer House Hotel  
Chitilee Guest House  
Clarence House  
The Coffee Shop  
Coledale Hotel  
Conservative Club  
Corner Shop  
Craglands Guest House

Crosthwaite Garage  
Crow Park Hotel  
Dalegarth Hotel  
Dale Head Hall Hotel  
Dale View Hotel  
Derwent Bank H.F  
Derwent Hill  
Derwent Jewellers  
Derwentwater Marina  
Dog and Gun  
Dollywagon Guest House  
Easedale Hotel  
Fawsley House  
Fellside Guest House  
Fergusons Printers  
Field and Stream  
Fine Designs  
Focus Photography  
Four in Hand Hotel  
George Fishers  
George Hotel  
Golden Lion Inn  
Great Little Tea Shop  
Greyrigg Guest House  
Greystoke House  
Grove House Gallery  
Glamara C.H.A  
Glamara Guest House  
Grange Bridge Cottage  
Grange Cafe  
Grange Hotel  
Greystones Guest House  
Hazel Bank Hotel  
Hazeldene Hotel  
Hazelmere Guest House  
The Heights Hotel

Hetheringtons  
Highfield Hotel  
Alan Hill Esq  
High Lodore Farm Cafe  
C and CA Holmes  
Holmewood House Hotel  
Hope Memorial Camp  
Horse and Farrier  
Keswick Golf Club  
Keswick Mountain Bike Hire  
Keswick Mountain sports  
Keswick Y.H.A  
Kiln How Cottages  
Kings Arms  
Kings Head Hotel  
Kitchens Cellar  
Kylesku Guest House  
Ladstock Hall Hotel  
Lairbeck Hotel  
Lakeland Rural Industries  
Lakeland Sheepskin  
Lakeside Caravan Park  
Lakeside House  
Langstrath Hotel  
Latrigg House  
Laurel Bank Guest House  
Leather Shop  
Leathes Cottage  
Leathes Head Hotel  
Littlefield Guest House  
Linnet Hill Hotel  
Lodore Hotel  
Longthwaite YHA  
Low Beck Side Farm  
Luchinis Ices  
Lynwood GuestHouse

Lyzzick Hall Hotel  
Low Manesty Caravan Park  
Mary Mount Hotel  
Medical Centre  
Middle Ruddings Hotel  
Mr Minute  
Montys Chippy  
Moot Hall  
Mountain World  
National Trust - Lakeside  
Necessary Angel  
Needle Sports  
New House Rosthwaite  
Newton Rigg College  
Des Oliver  
Open All Hours  
Orchard House  
Pack Horse Inn  
Peter Scott Gallery  
Police Station  
Priorholme Hotel  
Queens Hotel  
Rainbow  
Rathbones  
Rathbones Outdoor Wear  
Ravenstone Hotel  
Ravenstone Lodge Hotel  
Ravensworth Hotel  
Rembrandt Cafe  
Richmond House Hotel  
Rickerby Grange  
Rock at the Warehouse  
Rohan Ltd  
Rosthwaite General Store  
Rowe Opticians  
Royal Oak Braithwaite

Royal Oak Hotel Rosthwaite  
Salutation Inn  
Sandon Guest House  
Saw Mill Cafe Dodd  
Scafell Hotel  
Scotgate Camping Site  
Seathwaite Farm Cafe  
Seatoller Farm  
Seatoller House  
Shemara Guest House  
Silverdale Hotel  
Speddings  
Spuds and Things  
Strathmore Guest House  
Sundance Foods  
Sunnyside Guest House  
Swinside Inn  
Swiss Court Hotel  
S & S Travel  
The Sick and The Wrong  
Thirlmere YHA  
Thornleigh Guest House  
Thwaite Howe Hotel  
Timeshare Property Bond  
Timpsons  
Treeby and Bolton  
Tynemouth Lodge Hotel  
Village Shop Braithwaite  
Village Store Portinscale  
Underscar Hotel  
Walpole Hotel  
Wentworth Guest House  
Whinlatter Forest Tea Room  
White Horse Inn  
Yew Tree Cafe  
Yew Crag



**KESWICK MOUNTAIN RESCUE TEAM**  
**INCOME AND EXPENDITURE ACCOUNT FOR THE YEAR ENDED 30 NOVEMBER 1994**

	£	£	1994 £	1993 £
<b>Income</b>				
Patron's Subscriptions, Covenants			977	622
Donations			19,699	13,678
Collecting Boxes			9,637	7,457
Street Collection			3,953	6,529
Income Tax Recovered			814	197
Grant			-	590
Bank Interest			1,444	1,095
Miscellaneous Donations and Shirt Sales			3,628	-
Support Group			1,595	-
			<u>60,247</u>	<u>30,168</u>
<b>Expenditure</b>				
Garage and Team Head Quater Expenses:				
Rent, Rates and Water	1,041			1,038
Telephone and Electricity	1,986			1,249
Repairs and Renewals	471			97
Insurances	386			313
		3,884		2,697
Motor Vehicle Expenses:				
Insurance	495			513
Petrol and Oil	111			530
Maintenance	1,050			604
		1,656		1,647
Other Expenses:				
Maintenance of Radio Equipment	77			319
Printing & Stationery	2,716			2,424
Insurances	4,684			4,132
Postages and Sundry Expenses	2,796			2,243
Maintenance of General Equipment	2,337			2,093
Courses	1,969			556
Bank Charges	68			120
		14,647		11,887
			20,187	16,231
			40,060	13,937
Less: Depreciation of Vehicles and Equipment			8,965	10,437
<b>BALANCE CARRIED TO/(DEDUCTED FROM) ACCUMULATED FUND</b>			<u>£31,095</u>	<u>£3,500</u>

**KESWICK MOUNTAIN RESCUE TEAM**  
**BALANCE SHEET AS AT 30 NOVEMBER 1994**

	£	1993 £	1992 £
<b>Fixed Assets</b>			
New Base			
As at 1st December 1993	4,073		
Add Cost During Year	5,998		
		10,071	4,073
Stretcher Equipment			
As at 1st December 1993	595		
Add Cost During year	796		
	1,391		
Less Depreciation	209		
		1,182	595
Radio Equipment			
As at 1st December 1993	13,699		
Add Purchased During Year	400		
	14,099		
Less Depreciation	2,115		
		11,984	13,699
General Equipment			
As at 1st December 1993	10,339		
Add Purchased During Year	415		
	10,754		
Less Depreciation	1,613		
		9,141	10,339
Personal Equipment			
As at 1st December 1993	10,493		
Add Purchased During Year	1,841		
	12,334		
Less Depreciation	1,850		
		10,484	10,493
Motor Vehicles			
As at 1st December 1993	12,713		
Less Depreciation	3,178		
		9,535	12,713
<b>TOTAL FIXED ASSETS</b>		52,397	51,912
<b>Current Assets</b>			
Consumable Stores	80		80
Stock of Shirts	1,223		-
Cash at Midland Bank - Current Account	2,046		3,945
Cash at Northern Rock Building Society			
- Main Account	66,750		29,466
- Base Account	74,586		67,588
		144,658	101,079
<b>TOTAL FUNDS</b>		<u>£197,082</u>	<u>£152,991</u>

**KESWICK MOUNTAIN RESCUE TEAM  
BALANCE SHEET AS AT 30 NOVEMBER 1994**

	1993	1992
<b>Represented by:</b>		
<b>Accumulated Fund</b>	£	£
As at 1st December 1993		
Add Surplus from Income and Expenditure Account	78,908	71,335
Transfer from Medical Fund	31,095	3,500
Transfer from New Base Fund	6,495	—
	5,998	4,073
	<u>122,496</u>	<u>78,908</u>
<b>Medical Fund</b>		
As at 1st December 1993	6,495	—
Bank Interest	6,495	—
	<u>—</u>	<u>6,495</u>
<b>New Base Fund</b>		
As at 1st December 1993	67,588	—
Created During Year	11,000	57,093
Income Tax Recovered on		
Covenanted Donations	—	12,708
Interest Received	1,996	1,860
	<u>80,584</u>	<u>71,661</u>
Less Transferred to cover Expenditure	5,998	4,072
	<u>74,586</u>	<u>67,588</u>
<b>TOTAL FUNDS</b>	<u>£197,082</u>	<u>£152,991</u>

**TREASURER'S CERTIFICATE**

I certify that the above is a full record of the financial transactions of the Keswick Mountain Rescue Team for the year ended 30th November 1994.

14th February 1995

M. Fanning, Hon. Treasurer

**AUDITOR'S REPORT**

We report that we have examined the income and expenditure account for the year ended 30th November 1994 and the balance sheet as at 30th November 1994 of the Keswick Mountain Rescue Team, and that these agree with the records maintained by the Hon. Treasurer.

14th February 1995

Jane Meeks, Armstrong Watson & Co. Chartered Accountants

## Deed of Covenant

A Deed of Covenant is a particularly useful method of making a donation to Keswick Mountain Rescue Team for people who pay Income Tax. The Team can reclaim from the Inland Revenue the Tax you have paid on your donation. As the Deed of Covenant lasts for a minimum of four years it also has the benefit of giving the Team a regular income. If you would like to help the Team in this way simply complete the form and return it to the address below.

Andy Jones

### Persons who have made Deed of Covenant donations in 1994:

Dr J E Anderson	Michael Potter
A M W Cooke	Mrs Joyce T Robertson
Dr Edward Coupland	Bruce Gordon Smith
William James Daniels	Mrs Susan P Smith
Thomas Forshaw	Mrs Sheila Mary Stevens
Peter Mervyn Harris	Mark Thompson
William Raymond Hartland	William Whelan
Kenneth Hill	George Thomas Wood
John Manley	

*Please return completed Deed to KESWICK MOUNTAIN RESCUE TEAM, 41 Blencathra Street, Keswick, Cumbria CA12 4HX.*

## Deed of Covenant

Full names and  
address in CAPITALS

I (Mr/Mrs/Miss) .....  
of .....

Promise to pay KESWICK MOUNTAIN RESCUE TEAM out  
of my taxed income such a sum as will after deduction of  
income tax at the basic rate amount to

Please enter NET amount

£..... annually.

This must be on or  
after date of signing

The payments are to begin on the.....day of.....19 ....  
and continue for a period of .....years (minimum four)  
from that date or until I die if earlier.

Witness must NOT  
be spouse

SIGNED AND DELIVERED as a Deed

this.....day of.....19 ....

Covenantors Signature

Signature of witness

Full name and  
address of witness

Please complete  
if you know details

Tax district .....

Reference number .....

National Insurance Number .....

**Bankers Order:** PLEASE DO NOT DETACH

To:.....Bank plc

(Name and address of your bank)

Name of account to be debited:

Account Number.....

PLEASE PAY to Midland Bank plc, Market Square,  
Keswick, Cumbria CA12 5BQ (Sort Code 40-26-06) for the  
credit of KESWICK MOUNTAIN RESCUE TEAM (Account  
Number 60498173).

the sum of £.....(figures)

.....(words)

on the.....day of.....19 ....

and a like sum ANNUALLY on the .....

day of .....

in each of following three years making .....payments in all

Signed..... Date .....19 ....  
(Your Signature)

**Please return this completed Deed to KESWICK  
MOUNTAIN RESCUE TEAM, 41 Blencathra Street,  
Keswick, Cumbria CA12 4HX**



# **For Mountain Rescue Call 999 and ask for Police**

- Then be prepared to state:*
- Your name, and the number of the telephone from which you are ringing, and its location.
  - The nature of the incident, and its (accurate) location.
  - The time of the incident.
  - The number of casualties.
  - The details of any injuries.

- Then:*
- **STAY BY THE PHONE** so that the Team can contact you.



***Thank You for Supporting  
Keswick Mountain Rescue Team***

***A voluntary organisation funded by public donations***